



mission
igniter

PROBLEM

THERE IS NOT A CHURCH FOR EVERYONE

SOLUTION

WE EMPOWER LEADERS AND NETWORKS
TO MULTIPLY EXPRESSIONS OF CHURCH

OUTCOME

AN EXPRESSION OF CHURCH FOR
ALL PEOPLE IN ALL PLACES

STAFF



DUSTIN WEBER

EXECUTIVE DIRECTOR OF MISSION IGNITER
DUSTIN.WEBER@MISSIONIGNITER.ORG
833.709.2251



ERICK EWASKOWITZ

DIRECTOR OF COACHING AND TRAINING
ERICK.EWASKOWITZ@MISSIONIGNITER.ORG
833.709.2251



ANGELA CRAIG

START UP ACCELERATOR & PHYGITAL COACH
ANGELA.CRAIG@MISSIONIGNITER.ORG
425-578-0316



JULIE WEBER

ADMINISTRATIVE ASSISTANT
& EVENTS COORDINATOR
JULIE.WEBER@MISSIONIGNITER.ORG
517.507.4237

PO BOX 257

SPRING ARBOR, MI 49283

833.709.2251

WWW.MISSIONIGNITER.ORG

WHAT WE DO

**IGNITING NEW CHURCHES FOR ALL KINDS OF PEOPLE.
GET THE SUPPORT EVERY CHURCH PLANTER NEEDS.**

MISSION IGNITER EMPOWERS LEADERS AND NETWORKS TO MULTIPLY EXPRESSIONS OF THE CHURCH THROUGH CHURCH PLANTER RECRUITING, TRAINING, COACHING, AND PROVIDING SUPPORT. MISSION IGNITER WORKS WITH NETWORKS AND CONFERENCES TO DEVELOP AND IMPLEMENT CONTEXTUALIZED SYSTEMS AND SERVICES WHICH EMPOWER THEM TO MULTIPLY CHURCHES.

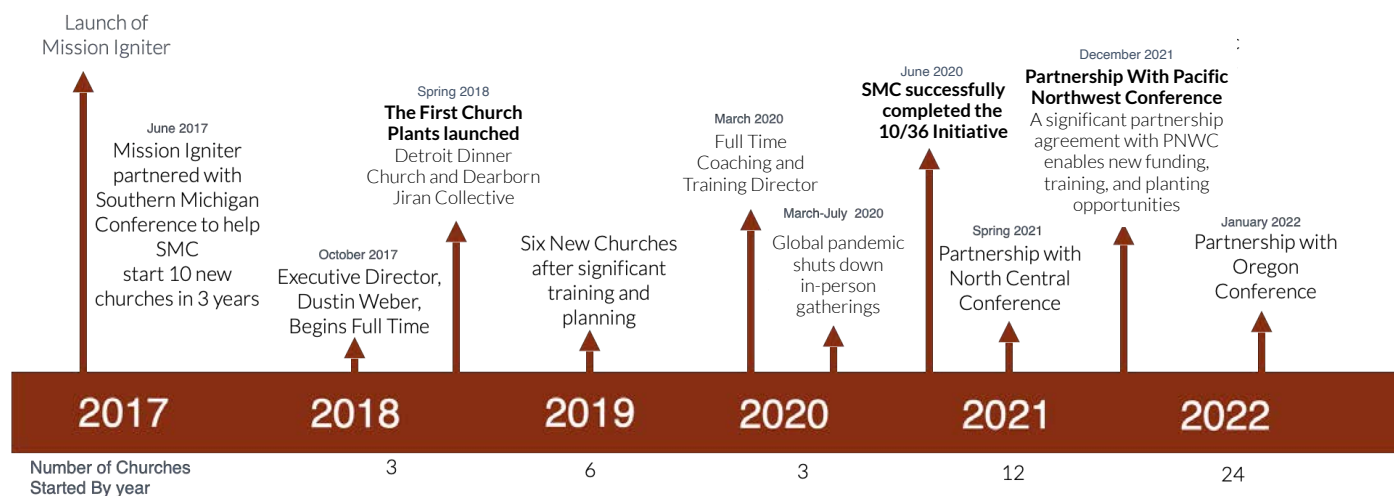


“

"I appreciate Mission Igniter's on-going support through mentorship, trainings, and opportunities to connect with other church planters."

Pastor Nathanael Carela

TIMELINE



MISSION IGNITER

**IGNITING NEW CHURCHES FOR ALL KINDS OF PEOPLE.
GET THE SUPPORT EVERY CHURCH PLANTER NEEDS.**

AMERICA NEEDS A CHURCH PLANTING MOVEMENT

A Church Planting Movement is a rapid and exponential multiplication of churches planting churches to 4th generation and beyond.

WHY A MOVEMENT?

- The early church in Acts was a movement.
- Our heritage is a movement.
- The Church today around the world is a movement.

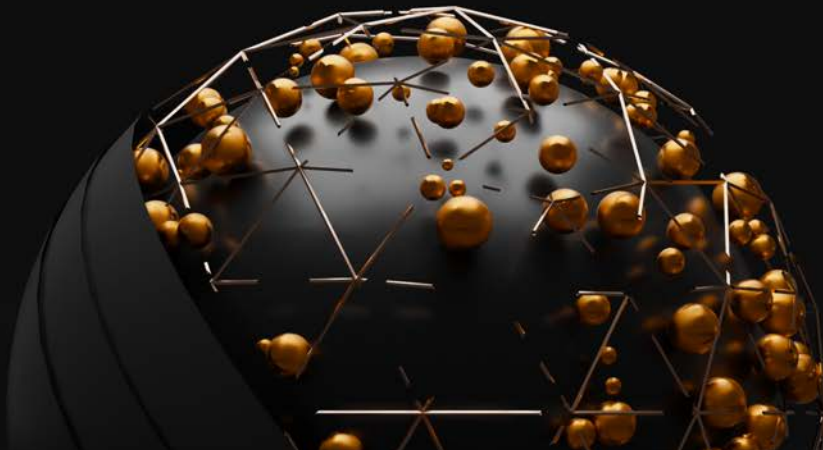
THE EARLY CHURCH IN ACTS WAS A MOVEMENT

God's commission to us is to make disciples of *all* people.

The Church, from its inception in Acts, has by its nature multiplied. Beginning with only 120 people (Acts 1:17), under the empowerment of the Holy Spirit, the church multiplied exponentially. In its first few days, it multiplied, to 3,000 (Acts 2:41), then to 5,000 (Acts 4:4). It multiplied from Jerusalem (Acts 1-4), then to the area around (Acts 5:16). It multiplied across ethnic and social lines to Samaria (Acts 8:4) and to the ends of the known Roman world (Acts 13:3). By 350AD, over 50% of the Roman Empire were Christians. Churches were planted and movement was birthed. The church was birthed to be a Spirit fueled movement which made disciples and organized them into churches.

"Therefore go and make disciples of all people, baptizing them in the name of the Father and of the Son and of the Holy Spirit, and teaching them to obey everything I have commanded you. And surely, I am with you always, to the very end of the age."

-MATTHEW 28:19-20



OUR HERITAGE WAS A MOVEMENT

The Methodist tradition was birthed as a Church Planting Movement in the 18th century.

John Wesley's heart is strangely warmed - God ignited the heart of John Wesley and the Methodist movement was launched. In the half-century that followed, over 100,000 people in England identified as Methodists.

Francis Asbury arrives in the American colonies - When Francis Asbury arrived in the American colonies in 1784, there were only a few hundred Methodists in America. When he died, 32 years later, there were 9,000,000.

The Emergence of Free Methodism - A new Methodist branch emerged in the formation of Free Methodism. The missional fervency of these Free Methodists combined with their convictions about social justice, specifically, human trafficking, and the care for the poor and marginalized led to rapid expansion in the first four decades.

The FMC was a church planting movement for the next 40 years which led to 870 churches launched.

THE GLOBAL CHURCH IS MULTIPLYING AS A MOVEMENT

1,851 church planting movements around the world are documented (Missions Frontiers, Issue 44:3 May/June 2022.)

In 2000, only a handful of movements existed but since then, they have proliferated.

Missiologists have identified the core principles which indigenous movements have embodied. Mission Igniter is working to instill these core principles in the American context as we work for a church planting movement here.

WHY NOT HERE? WHY NOT NOW?

We believe that God's design for the American church is that they would experience a church planting movement.

**OUR MISSION IS TO
FOSTER A MOVEMENT BY
MULTIPLYING APOSTOLIC
LEADERS AND CHURCHES.**

A group of people, mostly seen from behind, are walking away from the camera on a wide, paved path. They are walking towards a bright, hazy horizon where the sun is low, creating long shadows and a warm, golden light. The people are dressed in casual to semi-formal attire. The overall mood is one of journey and hope.

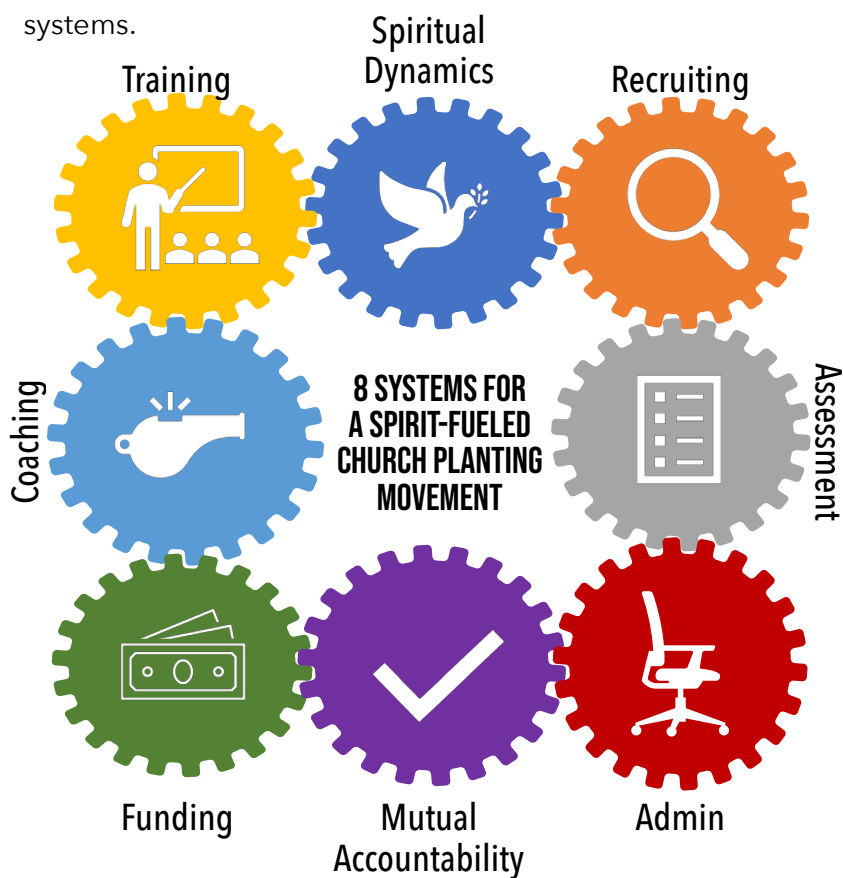
BOLD VISION: 500 NEW CHURCH EXPRESSIONS BY 2027

THERE IS NOT A CHURCH FOR EVERYONE

- Across North America today the spread of the Gospel and the witness of the church has stalled considerably.
- In the USA, there are 180 million with no connection to a local church, making this the largest mission field in the west and the third largest field in the world. (George Hunter, *Recovery of a Contagious Religious Movement*)
- Approximately 60% of American society is beyond the current reach of existing churches.
- The majority of churches in the United States have declined or plateaued.
- Church participation is becoming increasingly less relevant and attractive to those far from God.
- The fastest growing "religion" in the United States are the "Nones," those who when asked what religious affiliation they adhere to would respond, "none."
- Younger generations (Millennials, Gen Z and Generation Alpha) are growing up largely without any connection to the church or faith in Christ.
- 65 million have already dropped out of active religious attendance (*Church Refugees*).

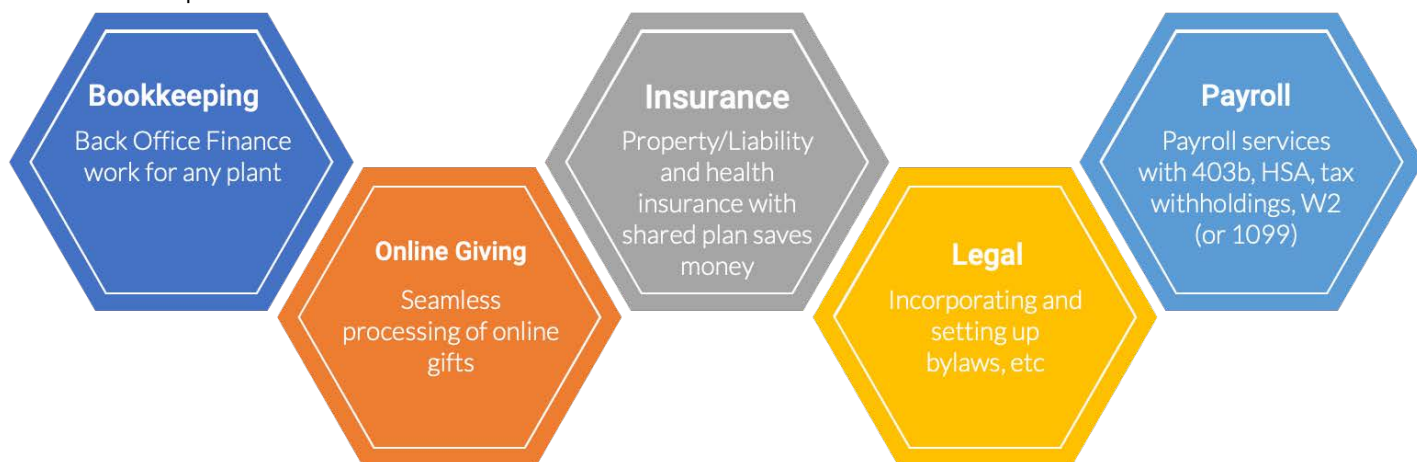
EIGHT SYSTEMS FOR A SPIRIT-FUELED CHURCH PLANTING MOVEMENT

We have identified “8 Network Systems” which any conference or network must facilitate to provide the resources & environment for churches and leaders in its network to multiply. Mission Igniter assists networks of churches in developing, implementing, and facilitating these systems.



ADMINISTRATIVE SERVICES

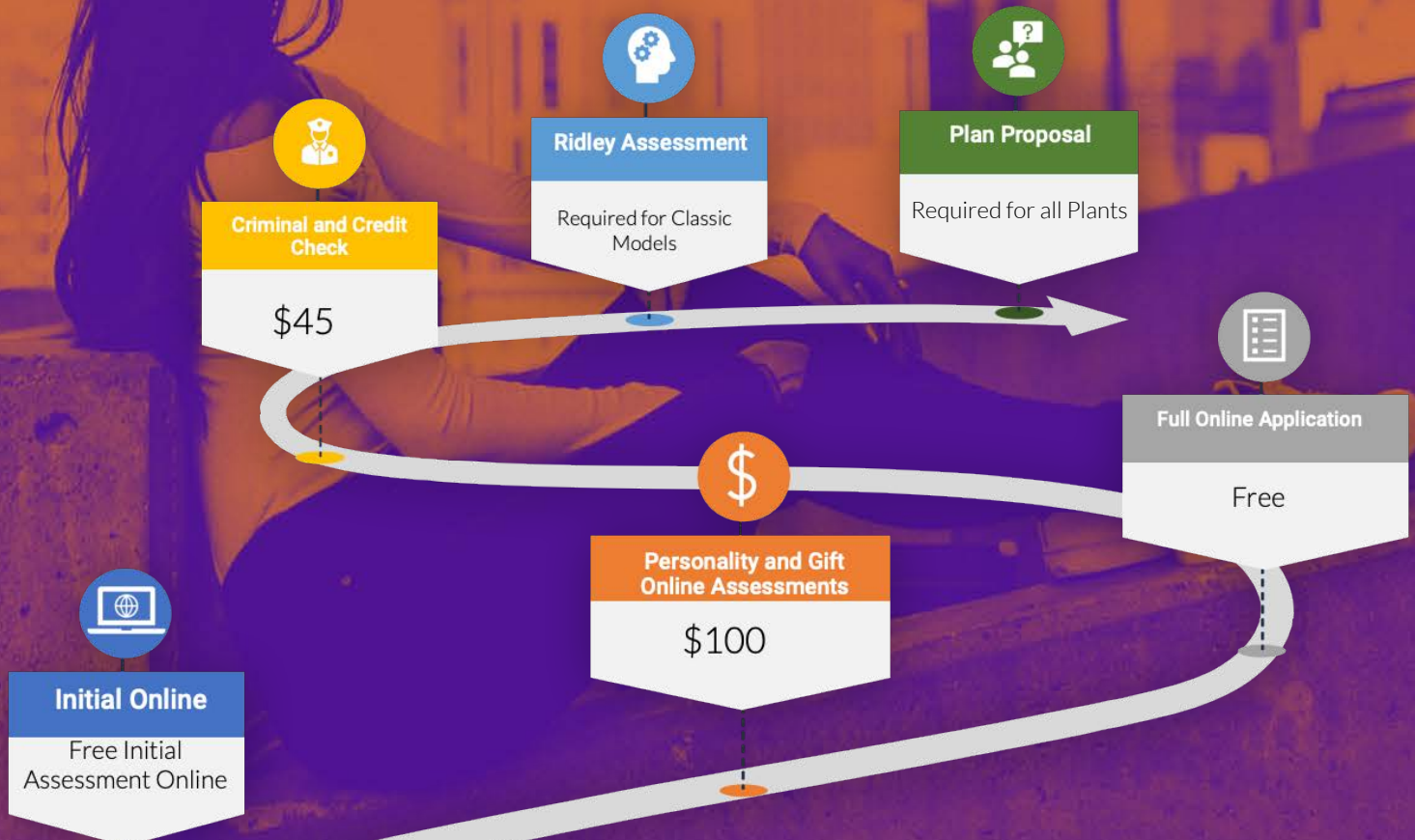
Start-up leaders are often not administrative leaders. We're here to help provide the tools, resources, and administrative support customized for the needs of each new plant. We can help lift the burden of getting a new church off the ground with these optional services:



THE RIGHT PERSON WITH THE RIGHT NETWORK PLANTING THE RIGHT MODEL IN THE RIGHT COMMUNITY

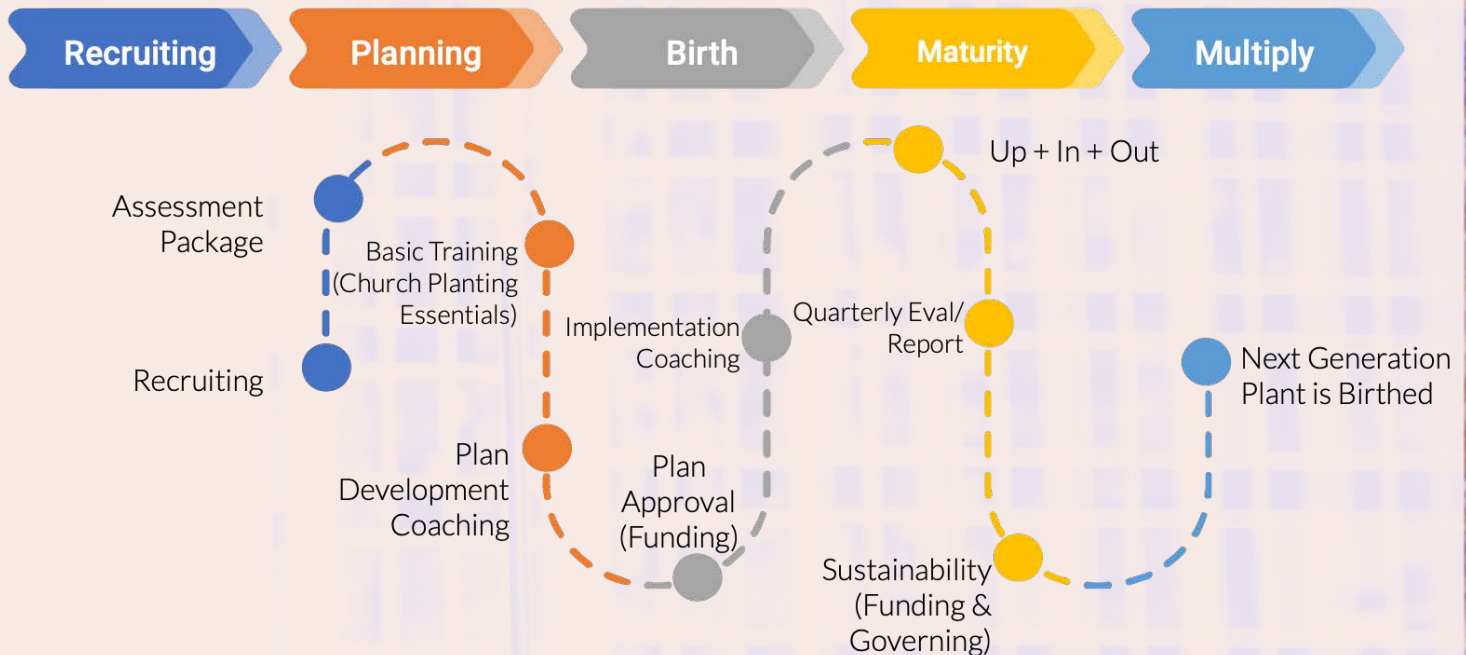
RECRUITING AND ASSESSMENT

A church planting movement discovers leaders that God is calling to start new churches and helps them discover God's design for them and the church they're called to start. The first step in birthing a new church is to identify a leader with a vision. These leaders come from differing backgrounds, with varying gift mixes. Mission Igniter works with potential planters to assess their character, competency, and compatibility with both the network and target community.



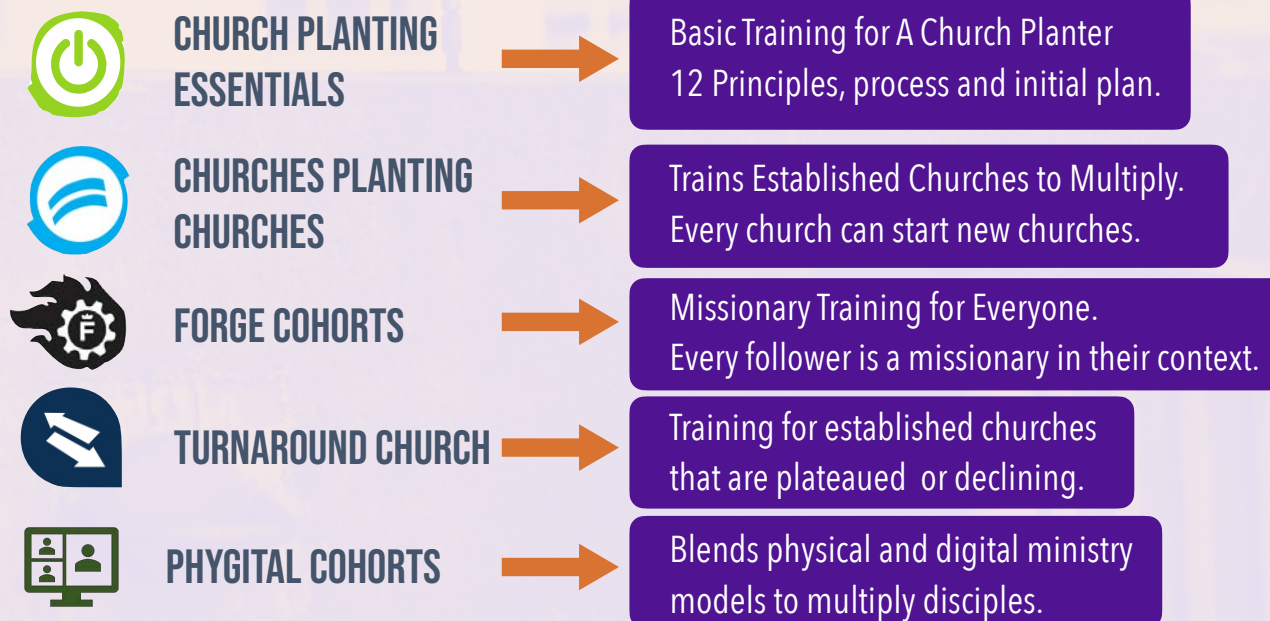
THE PROCESS OF PLANTING

A standardized process for planting new churches provides the basic stepping stones for leaders to envision how to start a new church expression.



TRAINING

Properly resourcing and preparing planters with the right tools to plan and lead is vital for the success of a plant. Mission Igniter has developed a training toolbox to resource leaders across the church. Each training track can lead to trainer certification and is reproducible.



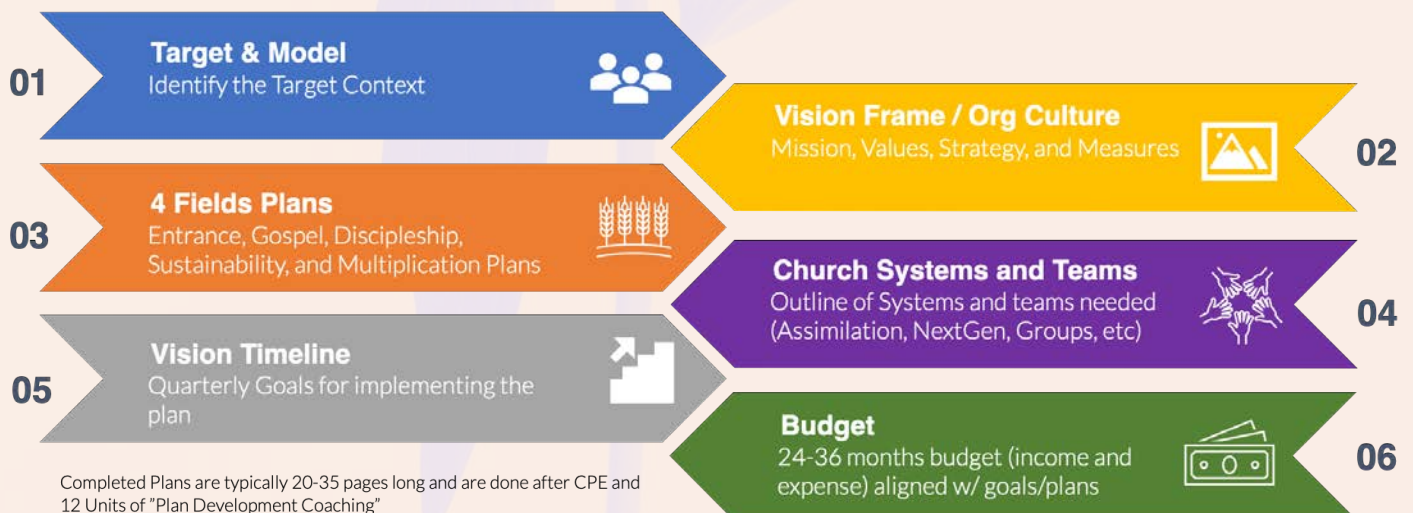
COACHING

Mission Igniter has three coaching deliverables designed to resource the multiplication of Churches. Research shows that coaching is essential to the success of church planting. Mission Igniter has a team of trained and certified coaches who walk with planters to develop and implement a strong comprehensive plan for launching a new church. Coaches meet with church planters twice a month for the purpose of encouragement, prayer, goal setting, and accountability. We offer two phases of coaching: plan development (3-6 months) and plan implementation (12-24 months). Mission Igniter also trains and certifies coaches so that every network can develop a team of coaches available in their region and context.



NEW CHURCH PLANS

A strong and vetted start-up plan is vital for the success of sustainable and thriving churches. Mission Igniter coaches walk planters through an extensive planning process to move their "God idea" to a "God-inspired plan." At the end of Plan Development Coaching, each planter will have a comprehensive plan that covers these six areas:



FUNDING PLANS

Every church plant needs a strong funding plan to launch and sustain a thriving church. Mission Igniter provides resourcing in developing this funding plan and tools to achieve it. New Church funding typically comes from these five sources:



MANY MODELS REACH MANY PEOPLE

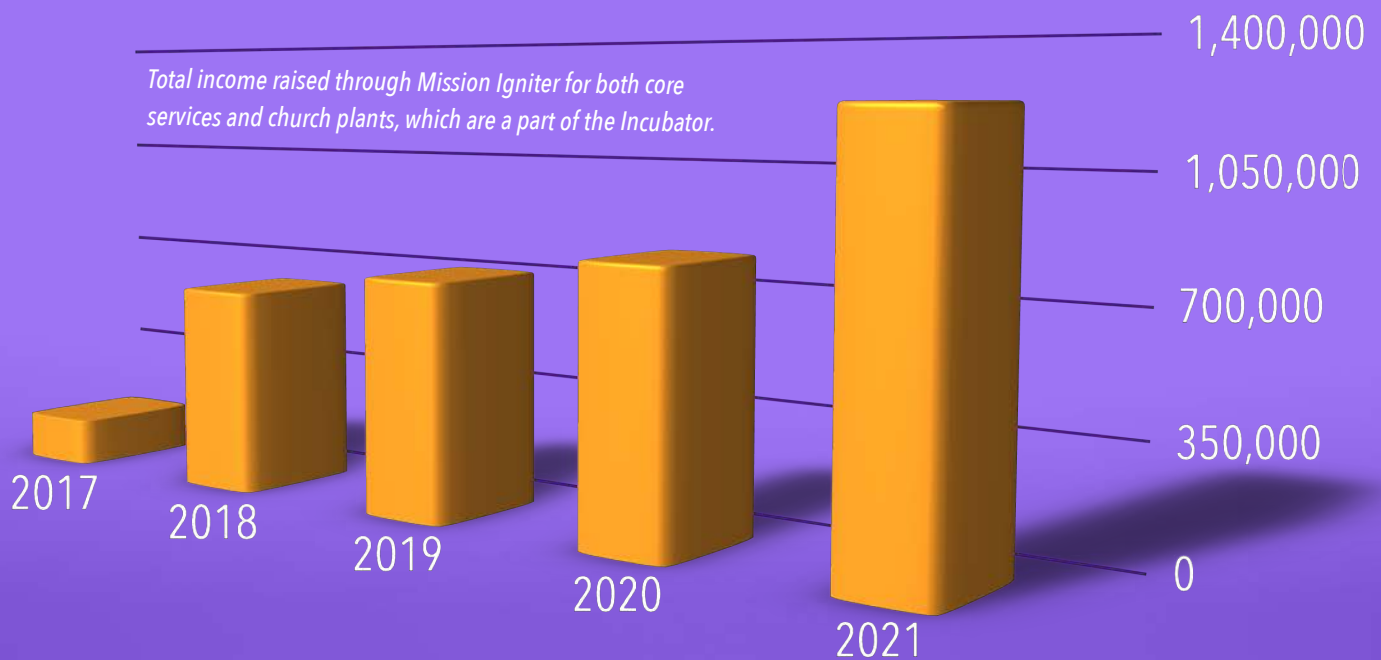
New Churches reaching new people necessitates a broad range of models. We have identified 4 categories of new church models that we utilize in helping planters envision and plan for their new plant. Each category has a series of related models that helps reach specific demographics of people. There is no 'one size fits all' in church multiplication.

CATEGORIES OF NEW CHURCHES

- 1 CLASSIC PLANTS**
Attractional Church plants typically using a Launch Large or Parachute Drop Model
- 2 LANGUAGE ETHNIC CHURCHES**
Typically first generation immigrants that often utilize a traditional attractional model
- 3 ONE CHURCH MANY EXPRESSIONS**
Multiplying worshipping communities that stay within the DNA, leadership structure, and organization of the parent church such as Multi-site, worship venues, etc
- 4 NON-TRADITIONAL**
Typically "missional models" such as Micro-church networks, Fresh Expressions, or Missional Communities

STEWARDED RESOURCES FOR A GREAT HARVEST

MISSION IGNITER HAS EMPOWERED CHURCH PLANTERS AND PARTNERED WITH ANNUAL CONFERENCES TO RAISE OVER \$3.5 MILLION TO START NEW CHURCHES SINCE 2017.



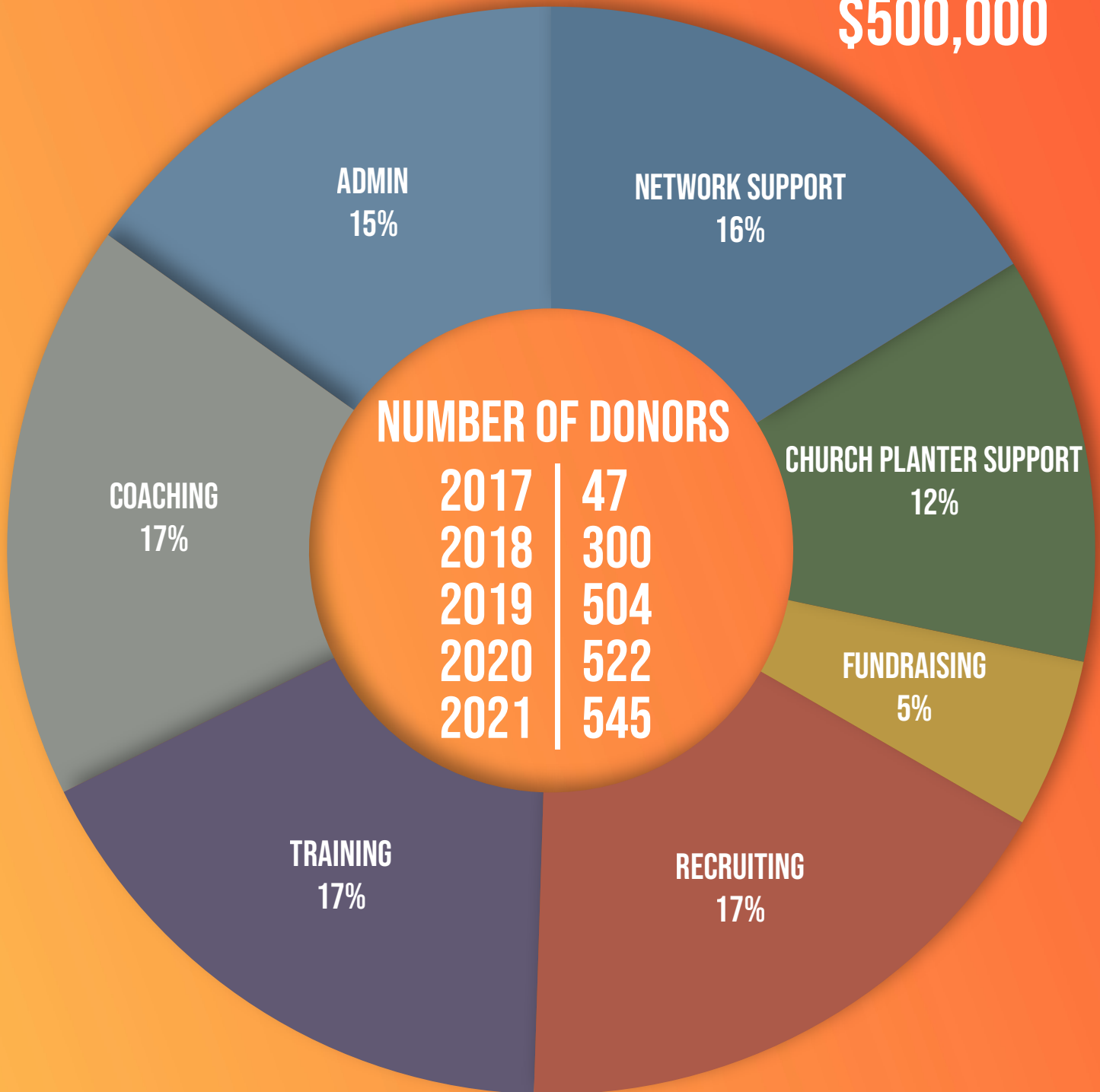
FUNDING MISSION IGNITER'S CORE SERVICES:

Recruiting, training, coaching, and providing support to new churches. We rely on 5 sources:



2022 CORE SERVICES BUDGET

\$500,000





“

**YOUR INVESTMENT IN
MISSION IGNITER
DIRECTLY IMPACTS
THE DISCIPLING AND
FORMATION OF NEW
COMMUNITIES OF
FAITH AMONG PEOPLE
WHO ARE CURRENTLY
NOT REACHED, NOR
WOULD EVER BE
REACHED BY OUR
EXISTING CHURCHES.**

PASTOR DERIK HEUMANN

JOIN US IN IGNITING NEW CHURCHES FOR ALL KINDS OF PEOPLE!

1

Get the support every church planter needs.

If you have a heart to see a new ministry or church started, set up your free initial coaching session with one of our team members. Email Julie Weber (see staff page) or visit MissionIgniter.org.

2

Financially partner with us to ignite new churches.

Jesus' mission for the church to multiply invites each of us to give what we can.

2022 Annual Fund | Need: \$65,000

The Mission Igniter Annual Fund provides operational resources to enable the Mission Igniter Team to build capacity in new regions, recruit new planters, and provide the necessary level of services to current plants. Every contribution is a significant one as we work together to ignite a church planting movement. Please consider what level the Lord is enabling you to join.

HOW TO GIVE

Give online:

MissionIgniter.org/give

Give by mail:

Mission Igniter
PO Box 257
Spring Arbor, MI 49283

Planned Giving:

Other giving vehicles are available such as the gifts of stocks or securities and may provide increased tax benefits to you. To discuss these options, please reach out to Dustin (Dustin.Weber@MissionIgniter.org) at 833-709-2251.

Mission Igniter is a 501(c)3 non-profit organization. All gifts are tax deductible.

Number of Gifts Gift Amount

| | |
|----|---------|
| 1 | \$6,500 |
| 3 | \$4,250 |
| 6 | \$3,250 |
| 8 | \$800 |
| 12 | \$550 |
| 20 | \$250 |
| 20 | \$200 |
| 35 | \$100 |



**IGNITING NEW CHURCHES FOR ALL KINDS OF PEOPLE.
GET THE SUPPORT EVERY CHURCH PLANTER NEEDS.**

